

CRESTLINE[®]

ELITE PREMIUM WOOD WINDOWS & PATIO DOORS



ALUMINUM CLAD WINDOWS & PATIO DOORS



Crestline
Windows & Doors





TABLE OF CONTENTS

Welcome	2	Hardware Options.....	10	Specialty Shaped Windows.....	20
Why Crestline?	4	Why Elite Premium?	14	Sliding Patio Doors	22
Interior & Exterior Options.....	6	Double Hung Windows	16	Hinged Patio Doors	24
Glass Options.....	8	Casement & Awning Windows.....	18	Crestline Warranty	26



Welcome. Whether building new, remodeling or replacing windows, Crestline® Windows and Doors offers unparalleled flexibility, reliability and energy efficiency.

5 Reasons to Consider Crestline

The Best Looking. Our top-of-the-line clad wood windows have premium aesthetics built into every design.

The Best Performing. Our advanced glazing technology allows Crestline to meet or exceed Energy Star requirements in all states.

The Best Service. We have short, consistent lead-times for special order deliveries, and Menards consumer “hotline” number to expedite requests.

The Best Warranty. Lifetime warranties on most products.

The Best Value. All of these reasons add up to the BEST value for your customers. They get the most for their money!





Why Crestline Windows & Patio Doors?

Crestline offers a full line of new construction with the options you need to set your home apart. Choose from a wide variety of styles, standard and custom sizes and shapes, elegant interiors, unlimited exterior colors, designer hardware colors, and trim options. With so much to choose from, you'll discover the perfect windows and doors for your home.



Elite Premium Clad

Rich Wood Interiors, Extruded Aluminum Clad Exteriors.

Durable and virtually maintenance free, extruded aluminum exteriors stand up to the harshest materials, resisting dents, dings and scratches with rot-resistant composition.



Wood Shield™ 30-Year Warranty. Wood components used in the production of Crestline windows and doors are treated with an advanced process called Wood Shield™ that prevents any rot and decay. This warranty coverage includes all wood species offered, with 30-year coverage on clad wood windows.



Free Glass Breakage Warranty. All Crestline products include FREE Accidental Glass Breakage Warranty – extra protection without any extra charge. Our warranty is also transferable to subsequent homeowners for 10 years.

Gold Standard. Crestline Elite Clad products are certified and labeled according to the highest standards, set by the Window and Door Manufacturers Association (WDMA)/National Fenestration Ratings Council Certification (NFRC) Program. All **WDMA/NFRC certified products** must pass performance tests conducted by an independent lab for resistance to air leakage, water penetration and wind pressures.

Interior & Exterior Options

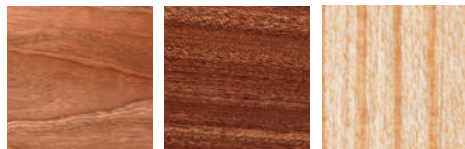
The possibilities are endless with the array of interior and exterior options available on our Elite Clad products. Choose from seven rich wood interiors and our optional five-step stain finish to compliment any home. Then find the perfect match with our 11 standard exterior colors, and a variety of designer colors to make the perfect statement.

Seven Wood Interiors. The right interior can make an ordinary room extraordinary. Crestline Elite offers standard pine interiors, as well as an array of hardwood options, including oak, maple, alder (knotty), cherry, mahogany, and Douglas fir. Factory finishes available on pine and oak.

SOLID WOOD INTERIORS



Pine (Standard) Oak Maple Alder (Knotty)



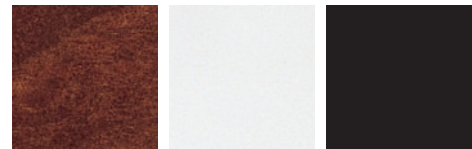
Cherry Mahogany Douglas Fir

Wood within same species may vary in color and grain. Crestline reserves the right to substitute ash for oak. These two hardwoods are virtually identical in color, texture, grain variation and finishing characteristics.

FACTORY FINISHES



Clear Satin Golden Oak Stain Fruitwood Stain



Chestnut Stain Painted White Prefinished Black

Unlimited Exterior Color Options. Our extruded aluminum-clad exteriors come in 11 standard colors so you have more choices—all at no additional cost. Want more options? Upgrade to one of our 47 Designer Series colors. Or request a custom color; anything is possible with our Custom Color-Match process.

STANDARD COLORS



White Almond Cream Taupe Hunter Green Brown Brick Red Dark Bronze



Charcoal Black Jet Black Terra Bronze

Colors have been reproduced as accurately as printing technologies permit. Visit your local Menards store for actual product color samples.

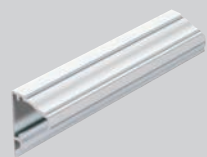
47 DESIGNER SERIES COLORS



Custom Color Match

Colors have been reproduced as accurately as printing technologies permit. Visit your local Menards store for actual product color samples.

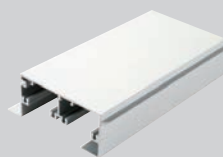
EXTERIOR TRIM OPTIONS



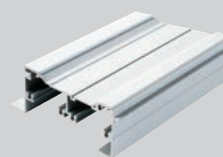
7/8" Brickmould



1-11/16" Brickmould*



3-5/16" Flat Casing*



3-5/16" Historical Brickmould*

*Factory-applied trims will require masonry straps for installation.

Glass Options

We build some of the best windows on the market. So it follows that we use the best technology to help you use less energy, spend less to heat and cool your home, and spend less time on maintenance. Our wide variety of glass options enable you to achieve optimum energy performance and comfort in any climate.



As an ENERGY STAR Partner, Crestline has determined that all products bearing the ENERGY STAR logo meet or exceed the ENERGY STAR guidelines for energy efficiency.

* Harmless inert gas increases energy efficiency by minimizing the transfer of warm and cold air. Not available in all states. Check for availability.

Specialty Glass Options. Add color or texture — or privacy and modesty — to your palette of design options. Special finishes and tint can give a project distinction. Specialty glass includes bronze, gray and obscure.



Bronze

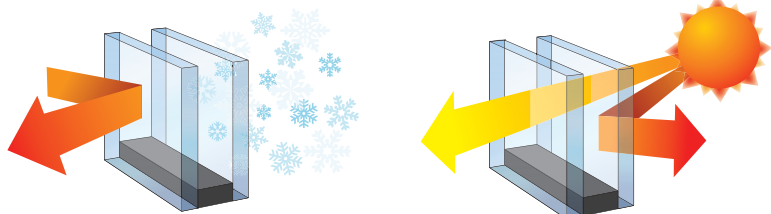


Gray

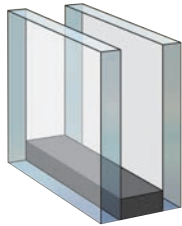


Obscure Glass

Comfort Year Round. During the winter, Zo-e-shield® minimizes heat loss, keeping rooms warmer. During the summer, Zo-e-shield reflects the sun's heat, keeping rooms cooler.



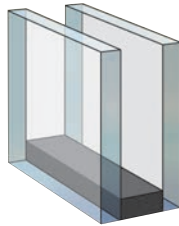
High Performance Glazing Options. With most of a window being glass, picking the right glass is crucial. Crestline offers a wide range of glass to meet the performance that is right for you.



Passive Solar Low-E

All Climate

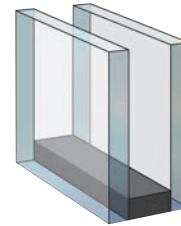
- Ideal for colder climates, allowing some of the sun's short-wave energy to pass through
- Help heat a home during the winter while still reflecting the interior long-wave heat energy back inside



Insulated Low-E

All Climate

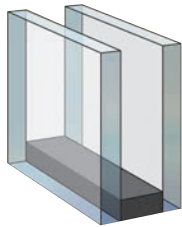
- Minimize sun's heat and damaging UV rays in warmer months
- Reflects sun's heat back into room during cooler months
- Protects interior furnishings from fading



Sun 240 Southern Low-E

All Climate

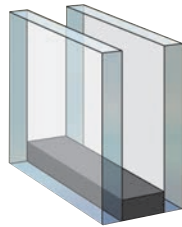
- Designed for rooms with higher than normal exposure to the sun
- 2 panes of glass that are specially coated for energy savings and UV protection



Zo-e-shield 5

Ultimate Solar Control

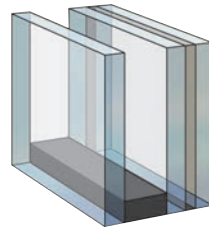
- Strong resistance to sun's glaring heat
- Excellent insulating value
- Excellent protection against damaging UV rays
- Maintains great clarity



Zo-e-shield 5E

Zo-e-shield 5 Plus Room Side Low-E

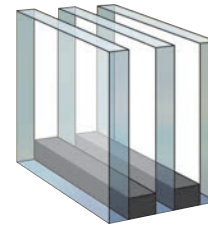
- Combination of two low-e coatings
- Significantly improved energy efficiency
- Complies with northern Energy Star guidelines with interior Low-E i89 coating



Zo-e-shield 6

Zo-e-shield 5 Plus Laminated Interior

- Best resistance available to sun's heat
- Minimizes glare and visible light transmittance
- Superior sound control and UV protection
- Forced entry protection



Zo-e-shield 7

Triple Glazed with 5 Coats of Low-E

- Controls glare and blocks sun's heat in warmer months
- Excellent for use in southern climate regions
- Great insulating value
- Additional sound control

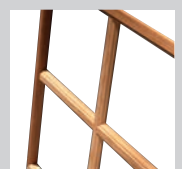
Add Character to Your Windows. Our grille program has more flexibility so you have more options. Choose from distinctive grille styles, multiple configurations, and standard prairie, colonial and Gothic patterns. Or request a custom pattern that's all your own.



11/16" Profiled Single-Toned or Two-Toned Grilles in Airspace



5/8" Flat Grilles in Airspace



7/8" Perimeter Removable Wood Grilles



5/8", 7/8", 1-1/8" Simulated Divided Lites

Grilles in Airspace. Available in sculptured or flat aluminum, these bars are between the two panes of glass making it easy to clean and maintain.

Two-Toned Grilles. These 11/16" profiled aluminum grilles between the glass can be finished in a two-toned option, keeping white on the interior with any of our standard colors on the exterior.

Perimeter Removable Wood Grilles. Snap securely in and out of place, our concealed pin system allows the interior grille frame to be effortlessly removed when needed.

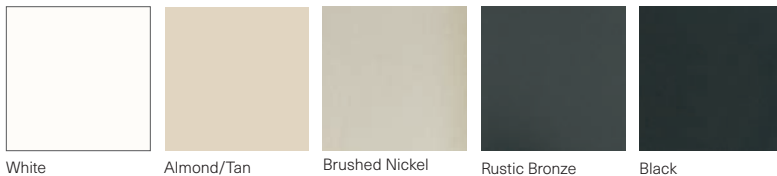
Simulated Divided Lites. Creating historical aesthetics, these grilles replicate the appearance of single-pane windows, with more energy efficiency and customization.



Hardware Options

Select from a multitude of high-quality options and accessories available with the Elite Premium product line. Your windows and patio doors can easily match or coordinate with any architectural design.

WINDOW HARDWARE FINISHES



White Almond/Tan Brushed Nickel Rustic Bronze Black

WINDOW HARDWARE OPTIONS



Casement and Awning
Nested Handle



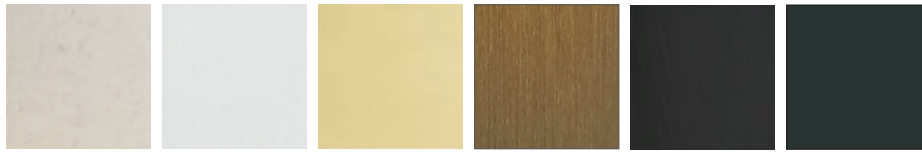
Casement and Awning
Sequential Lock Lever



Double Hung Sash Lock

Colors have been reproduced as accurately as printing technologies permit. Visit your local Menards store for actual product color samples.

HINGED PATIO DOOR HARDWARE FINISHES



Brushed Nickel Polished Chrome Bright Brass PVD Antique Brass Oil-Rubbed Bronze Black

HINGED PATIO DOOR HARDWARE OPTIONS



Hinged Door
Arch Top Escutcheon

Hinged Door
Square Top Escutcheon

Hinged Door
Deadbolt and Passage Set

ELITE SLIDING PATIO DOOR HARDWARE FINISHES



White Brushed Nickel Polished Chrome Bright Brass PVD Antique Brass Oil-Rubbed Bronze Black

SLIDING PATIO DOOR HARDWARE OPTIONS



Standard Sliding Door

ADDED SECURITY
FOR YOUR HOME

Colors have been reproduced as accurately as printing technologies permit. Visit your local Menards store for actual product color samples.







WHY ELITE PREMIUM?

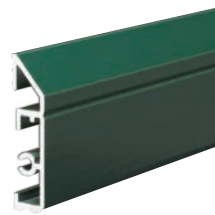
Why Crestline Elite Premium Clad?

Instead of settling for the basic, discover the possibilities with Crestline Elite Premium Clad. There are no limits to what you can do when designing your windows and patio doors. Choose from a wide variety of styles, standard and custom sizes and shapes, elegant wood interiors, unlimited exterior colors, designer hardware colors and glass, grille and trim options.

Uncompromising Craftsmanship. Since 1892, we have been handcrafting some of the finest doors and windows on the market, which means you can count on them to be exceptionally beautiful, reliable, and easy to operate.



Worry-free exteriors. Our uniquely designed extruded aluminum cladding is 50% stronger than thin roll-form cladding used on many other windows. Crestline's high quality aluminum clad exteriors feature commercial grade premium paint that resists fading and chalking.



Ours



Other Manufacturers

THE PERFECT WINDOWS &
DOORS FOR YOUR HOME



Rich Wood Interiors. Available in seven solid wood interiors. Ready to finish or choose from our pre-stained options to save you time, work and money.

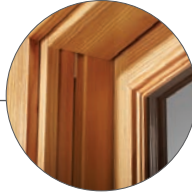
Aluminum Clad Exteriors. Durable and virtually maintenance free, extruded aluminum exteriors stand up to the harshest elements with rot-resistant composition.

Wood Shield 30-Year Warranty. Wood components used in the production of Crestline windows and doors are treated with an advanced process called Wood Shield™ that prevents any rot or decay.



Double Hung Windows

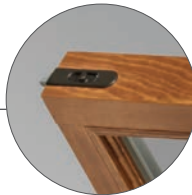
Our classic double hung windows are popular for their timeless beauty and ease of use. Both sash open so you can enjoy fresh air from both portions of your window at the same time.



Optional Wood Jamb. An optional vinyl jamb liner with a solid wood insert is available to conceal the balance system. All hardwood species have a matching insert; pine units have a maple insert. Clad units also have a matching exterior clad filler.



Security for Your Home. Our stylish recessed lock and concealed keeper look great and create a secure, weathertight seal.



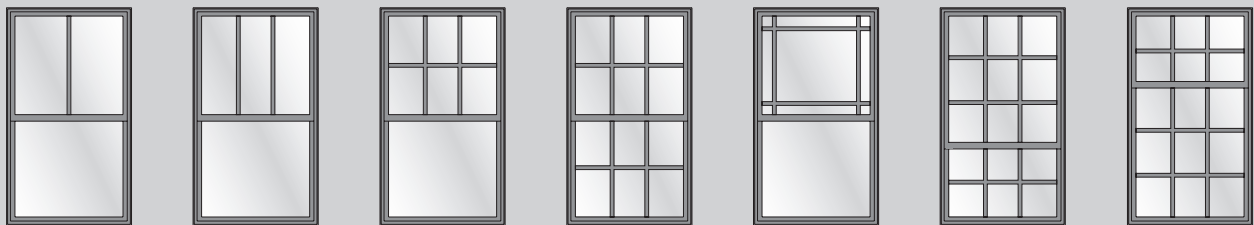
Easy Cleaning. Both top and bottom sash tilt in and can be effortlessly removed for easy cleaning from inside of the home with easy access tilt latches.



Count on Our Construction. From the solid wood construction to the Innovative Constant Force Balance™ system, Crestline Elite double hung windows outperform. A built-in lift rail eliminates unnecessary hardware.



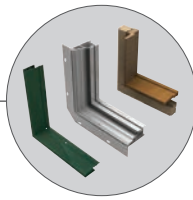
OPTIONAL GRILLE PATTERNS



Patterns may be affected by glass size. Drawing required for custom patterns.

Oriel Style

Cottage Style



Superior Engineering is Built Right In.

Our Tri-Core Frame Technology is equipped with a multi-chambered sub-frame that is completely impervious to moisture and provides a powerful thermal barrier.



Secure Locking System. Casements open and lock simultaneously with a single lock and operator for added convenience and security.



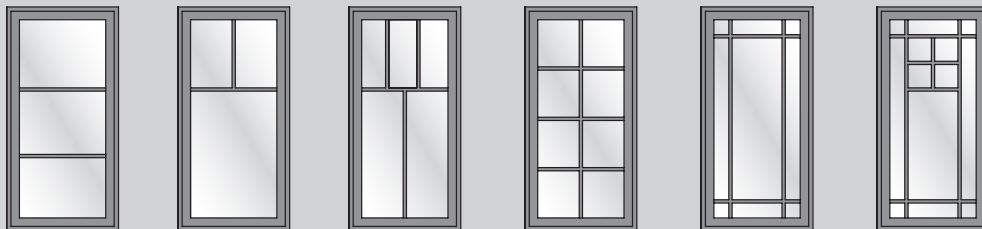
Fold Down the Handles. After opening or closing your casement or awning window simply fold the handle out of the way. Made of durable metal for smooth operation, the handle nests in its own keeper for added convenience and visual appeal.



Breathe Easier. Crestline Elite awning windows are the perfect choice for allowing ventilation in tight areas.



OPTIONAL GRILLE PATTERNS

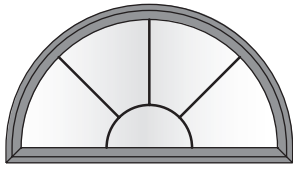


Patterns may be affected by glass size. Drawing required for custom patterns.

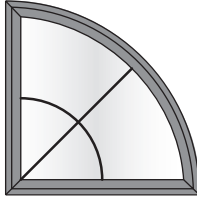


Casement & Awning Windows

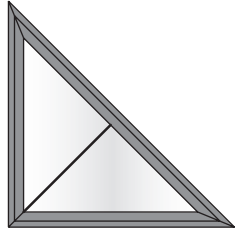
With a unique design that features a side-hinge and a hand crank to open, our Elite casement windows offer the perfect blend of aesthetic appeal and ease of use. Also available as an awning for the perfect choice in allowing ventilation in tight areas.



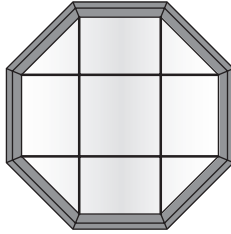
Half Circle



Quarter Circle

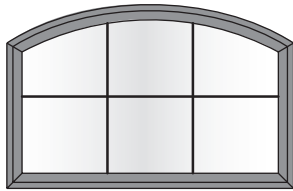


Right Triangle

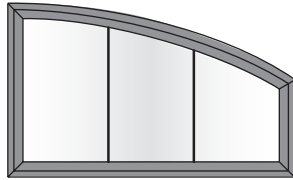


Octagon

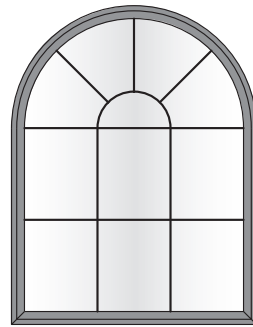
YOUR WINDOW,
YOUR WAY



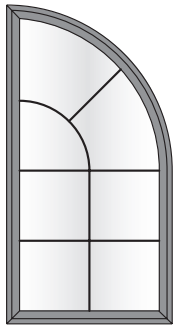
Eyebrow



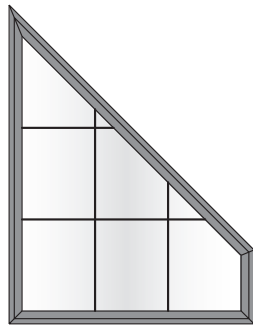
Quarter Eyebrow



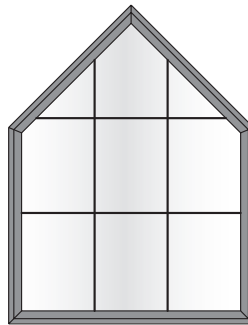
Half Circle w/Extended Legs



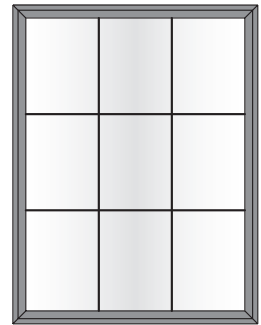
Quarter Circle
w/Extended Legs



Trapezoid

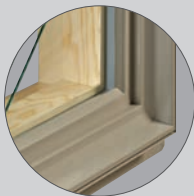


Pentagon



Rectangle

Interested in additional shapes? Ask about our complete selection.



Standard Frame



Simulated Sash

No Boundaries. Our standard frame offers a sleek design providing the most glass in our specialty shape windows. The simulated sash option give the appearance of a true sash window with the performance of a direct set, stationary option.



Specialty Shaped Windows

We make custom windows every day, so there's no need to settle for the basics. Whatever you envision for your home—geometric shapes, half rounds, radius tops, and custom shapes—you can have. Every Crestline Wood window and door is available in custom sizes, made to your specifications for a perfect fit.

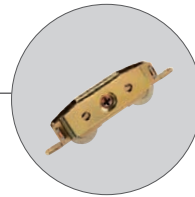


Siding Patio Doors

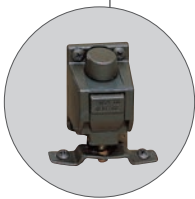
Whether your home is casual or elegant, Crestline Elite has the patio doors to complement your style. These units provide the indoors with expansive and uninterrupted views. By adding more natural light and fresh air, sliding patio doors can enlighten any room.



Comfortable Handles. Our sliding patio doors come standard with ergonomically correct handles for easy, comfortable use.

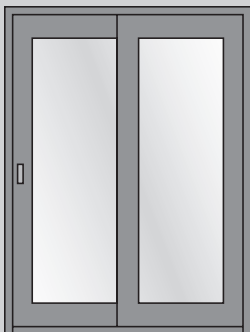


Worry-Free Operation. All of our sliding patio doors have adjustable, heavy-duty dual tandem rollers so your door glides easily, time after time.



Added Security for Your Home. Our sliding patio doors have an optional spring-loaded foot bolt that you can lock even when the door is open.

STRENGTH, SECURITY
AESTHETICALLY,
APPEALING

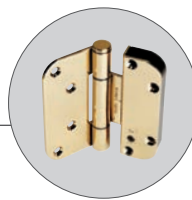


French Style



Traditional Style

We Have Style. Our French-style patio doors feature wide stiles and rails for a classic look. Our traditional sliding patio doors have narrow stiles and rails and more glass to expand your view.



Get a Better Fit. Our hinged patio doors come with four fully adjustable hinges – versus the industry standard of three – to ensure proper fit, proper swing, and an energy-efficient seal.

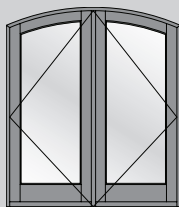


Be Secure. All hinged doors are equipped with a corrosion-resistant locking system that secures the door at multiple locations with the turn of a handle.

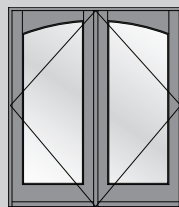


Get Extra-Strong Doors. Our optional, premium heavy-duty doors have 2-1/4" solid wood core panels for extra strength and durability.

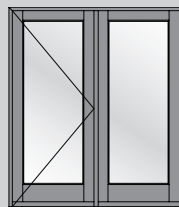
THE DOOR TO INSPIRATION
OPENS HERE



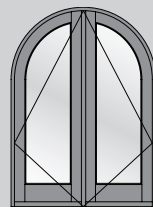
Eyebrow Door



Arbor Series Door



Center-Hinged Door



Full Radius Door

Keep Your Options Open. These doors are available in a wide variety of styles and operations. Inswing or outswing door operations can accommodate the room arrangements.



Hinged Patio Doors

Center hinged and French inswing and outswing styles are available in standard and custom heights from 6' 8" all the way to 10' 0" so you can get the door that's perfect for your home.



Crestline's Lifetime Limited Warranty

Effective Date: June 1, 2016

Subject to the conditions, exclusions and limitations that follow, the manufacturer of CRESTLINE® products, ("CRESTLINE") warrants CRESTLINE products (Select 500™, Crestline Acclaim®, Elite Premium Clad, Elite Premium Primed, Select 500™ Replacement, and Elite Premium Replacement Windows and Doors) to be free from defects in material and workmanship as noted below. All referenced times are in relation to date of purchase.

Innovations: Wood Shield®, Symmetry Balance System®, TriCore® Frame Technology, EasyCare®, Zo-e-shield™

WARRANTY COVERAGE

Insulated Glass Hermetic Seal – Lifetime

CRESTLINE warrants the insulated glass, if any, against failure of the hermetic seal. During the first twenty (20) years after the date of purchase, CRESTLINE's obligations under this warranty shall be limited to, at its option, repair or replacement of the insulated glass only (FOB the original point of delivery), or refund of the original purchase price of the insulated glass. After twenty (20) years from the date of purchase, CRESTLINE's obligations under this warranty shall be limited to granting a prorated credit against the then current list price of comparable new replacement insulated glass. Such credit shall be computed on the basis of the number of years from the date of purchase as follows:

Years from Date of Purchase	Amount of Credit
0 to 20.....	100%
21 to lifetime.....	10%

Vinyl Clad Products - Lifetime

CRESTLINE warrants its vinyl exterior cladding, to be free from defects in material and workmanship and to not rot, rust, crack, pit, corrode, peel, blister or flake. For any products or parts determined by CRESTLINE to contain defects in material or workmanship, CRESTLINE will, at its option, repair the product or parts at no charge, or provide replacements at no charge, or refund the original purchase price of the product or part containing the defect. Decisions as to whether to repair, replace, or refund shall be made by CRESTLINE, in its sole discretion.

Window and Patio Door Product – Twenty Years

CRESTLINE warrants that its products and insulated glass shall be free from defects in material or workmanship for a period of TWENTY (20) YEARS unless specified below.

Should any CRESTLINE products or components of products be determined by CRESTLINE to contain defects in material or workmanship within the applicable warranty period, CRESTLINE will, at its option, repair the products or components at no charge, or provide replacement products or components at no charge, or refund the original purchase price of the products containing the defective components. Decisions as to whether to repair, replace or refund shall be made by CRESTLINE in its sole discretion. Replacements will be the closest equivalent current product and may not exactly match the original. Replacements will be delivered to the original point of purchase with no shipping charges. If shipment direct to the consumer is requested, normal shipping and handling charges will apply.

WOOD ROT

Wood Shield Clad Wood Products – Thirty Years

Maintained clad wood products shall be warranted against wood rot for a period of THIRTY (30) years. Mildew and other discoloration due to condensation is not considered rot and not covered. Products in contact with the ground are not warranted against wood rot.

Wood Shield Clad Wood Products – Ten Years

Maintained primed /unprimed (unclad) wood products finished pursuant to installation instructions shall be warranted against wood rot for a period of TEN (10) years. Mildew and other discoloration due to condensation is not considered rot and not covered. Products in contact with the ground are not warranted against wood rot.

ACCIDENTAL GLASS BREAKAGE

Limited Lifetime

CRESTLINE warrants its insulated glass against accidental breakage except as delineated below:

- This warranty does not cover glass breakage caused by acts of God, improper installation, abuse, misuse, alteration, building or foundation movement, improper or insufficient handling, or storage.
- This coverage is transferable to subsequent homeowners. The transferred coverage is ten (10) years from the date of manufacture.

Laminated Glass – Five Years

Laminated glass shall be free from defects in material and workmanship for a period of FIVE (5) years.

Decorative Glass – Five Years

Decorative glass shall be free from defects in material and workmanship for a period of FIVE (5) years.

Factory-Applied Interior Finishes – Five Years

Factory-applied interior finish or stain is warranted against peeling, checking, or cracking for FIVE (5) years. Standard factory-applied primer is not a finish coat.

Hardware Finish – Ten Years

Corrosive-resistant finishes and seacoast hardware packages installed within one mile of a corrosive environment shall be warranted for TEN (10) years unless marred or scratched. The above conditions/exclusions apply.

Glass Stress Cracks – One Year

Glass shall be warranted against stress cracks for ONE (1) year.

Transferability – Ten Years

This warranty is transferable to subsequent owners. This transferred warranty is the lesser of TEN (10) years or the period specified from the date of manufacture

NON COVERAGE

- Normal wear and tear, weathering and natural variations in wood color or texture are considered normal and not a product defect.
- Normal wear and tear of hardware and hardware finishes that can naturally occur (e.g. corrosion, tarnishing) or damage at construction site.
- Products not installed pursuant to our installation instructions attached to each unit.
- Minor scratches, slight glass curvature or glass imperfections are natural variances in glazing and do not impair structural integrity or significantly obscure normal vision.
- Repairs, refinishing or similar activities involved when skilled labor installs or replaces products.
- Condensation and any related water damage (such as mold or wood rot due to water or ice build up), which occur as a result of humidity within the property or changes in the interior/exterior temperatures, do not indicate a defect. Contact a heating/cooling specialist to assist.
- Products installed in a non-vertical position, discoloration of non-visible parts, or failures or operating difficulties due to accident, acts of God, abuse, misuse, alteration, exposure to the elements, improper or insufficient handling, storage, maintenance or service including, but not limited to, obstruction of weep holes. Installation of units must be finished and operated in accordance with our installation instructions attached to each unit.
- Failures or operating difficulties resulting from use of high-expansion foam insulation, incompatible sealant, cleaning agent, or exposure to corrosive, unusual, harmful or aggressive substances, acid rain, fumes or condensates, subjection to abnormal stress from localized application of heat, excessive vibration or movement of buildings or foundations or to other abnormal physical stress or use in high humidity areas.
- Products installed in buildings with cladding systems that do not allow for proper management/drainage of moisture (e.g. EIFS or synthetic stucco without an engineered drainage system).
- Vinyl parts or weather strip that has non-factory-applied paint or stain voids the warranty of the affected unit.
- Warpage or air/water infiltration on any swing door with a call-out height of greater than 6'10" unless CRESTLINE'S multi-point lock system is used with the door.
- Any installations at an altitude over 3,500 feet above sea level unless capillary tubes have been installed or a HIGH ALTITUDE GLASS PACKAGE is used, which provides limited coverage.
- Insulated True Divided Lite units.
- Products with wood surfaces that are not covered within thirty (30) days after purchase with a high-quality top coat of paint, sealer or varnish. The top coat should be applied as recommended by the paint manufacturer and it is the customer's responsibility to properly care for and protect the woodwork against moisture or excessive dryness.
- Products with factory-applied primer paint that are not covered with a finish coat within six (6) months of unit installation.
- Products or components not provided by CRESTLINE including but not limited to hardware locksets, strikes, or panning systems.
- CRESTLINE products that are stacked or mulled with products manufactured by others.
- Products with modifications (e.g. customer applied paint finishes, tints, films) or security systems without prior approval.

ADDITIONALLY

- Insulated units with capillary tubes will not have inert gas fill.
- ADA-compliant sills or telescoping, pocket and bifold patio door systems are not designed nor are they intended to manage moisture or water infiltration. The determination of proper building design and moisture management (through an overhang or otherwise) is the responsibility of your building designer, architect or contractor.
- Warping of a door shall not be deemed to be a product defect unless the warping is in the door panel itself and then only if the warping is more than one quarter inch. The amount of warp shall be determined by placing a taut wire or string or straightedge across the face of the installed door panel thought to be concave and measuring the amount of warp at the point of the greatest distance between the bottom of such wire, string or straightedge and the face of the door panel. CRESTLINE may, at its option, defer action on a warping claim for a period of not more than ONE (1) year from the date of the claim to permit the door panel to adjust to temperature and humidity in its installed position.
- The performance of windows and doors may be affected by factors beyond CRESTLINE'S control. Examples include handling and installation, construction details of the building, exposure conditions, maintenance, normal wear and tear, and migration of inert gas. Structural or thermal ratings are for comparison purposes only. While CRESTLINE products are manufactured to meet or exceed published ratings, it is not possible to guarantee that they will meet or exceed those ratings after they have been installed.
- CRESTLINE is not responsible for removing any defective products from the structure in which they are installed, or for installing any replacement products or components provided by CRESTLINE pursuant to this limited warranty, or for any painting, refinishing or other work necessary to complete the installation of replacement products or components, all of which shall be the consumer's responsibility.

CLASS ACTION AND JURY TRIAL WAIVER

YOU AGREE THAT ANY DISPUTE TO INCLUDE, BUT NOT LIMITED TO, BREACH OF CONTRACT, BREACH OF WARRANTY, CLAIMS BASED IN TORT, NEGLIGENCE, PRODUCT LIABILITY, FRAUD, MARKETING, STATE OR FEDERAL REGULATIONS, ANY CLAIMS REGARDING THE ENFORCEABILITY OF THIS LIMITED WARRANTY, AND THE WAIVER OF JURY AND CLASS ACTION TRIALS ("DISPUTED CLAIMS") MUST BE BROUGHT IN YOUR INDIVIDUAL CAPACITY, AND NOT AS A PLAINTIFF OR CLASS MEMBER IN ANY PURPORTED CLASS OR REPRESENTATIVE PROCEEDING. YOU ALSO AGREE THAT YOU ARE WAIVING THE RIGHT TO A TRIAL BY JURY AND AGREE TO HAVE ALL DISPUTES HEARD AND DECIDED SOLELY BY A STATE OR FEDERAL COURT.

OPT-OUT PROCEDURE

YOU MAY CHOOSE TO OPT OUT OF THE CLASS ACTION AND JURY TRIAL WAIVER BY SUBMITTING A WRITTEN OPT-OUT FORM THAT CAN BE FOUND ON CRESTLINE'S WEBSITE, WWW.CRESTLINEWINDOWS.COM/OPTOUT.PDF, WITHIN SIXTY (60) DAYS FROM THE DATE YOUR CRESTLINE PRODUCT IS INSTALLED. OPTING OUT OF THE CLASS ACTION AND JURY TRIAL WAIVER WILL NOT AFFECT ANY OTHER TERMS OF THIS LIMITED WARRANTY WHICH WILL REMAIN IN EFFECT.

GENERAL PROVISIONS

Selection and purchase of CRESTLINE products which conform to all applicable building codes and local ordinances is the sole responsibility of the architect, building contractor or homeowner. CRESTLINE assumes no responsibility for compliance with local building codes or ordinances, or for calculation and design of support mullions, structural support, or flashing required for installation. Consult with your local building code officials and/or a qualified contractor, architect or engineer for specific requirements.

THERE ARE NO OTHER EXPRESS WARRANTIES EXCEPT AS SET FORTH HEREIN. ANY IMPLIED WARRANTIES OF MERCHANTABILITY OR FITNESS FOR PARTICULAR PURPOSE ARE LIMITED IN DURATION TO THE PERIODS OF COVERAGE OF THE EXPRESS WARRANTIES SET FORTH IN THIS LIMITED WARRANTY. CRESTLINE SHALL NOT BE LIABLE FOR APPLICABLE TAXES OR ANY INCIDENTAL OR CONSEQUENTIAL DAMAGES INCLUDING, BUT NOT LIMITED TO, DAMAGE OR LOSS TO PERSONS OR OTHER PROPERTY.

Some states do not allow limitations on how long an implied warranty lasts, and some states do not allow the exclusion or limitation of incidental or consequential damages, so these limitations and exclusions may not apply to you. This warranty gives you specific legal rights, and you may also have other rights which vary from state to state.

APPLICABLE LAW

All Disputed Claims shall be governed and construed in accordance with the internal laws of the State of Wisconsin, regardless of any choice of law doctrine.

NO DISTRIBUTOR, SALESPERSON, DEALER, RETAILER OR OTHER REPRESENTATIVE OF CRESTLINE PRODUCTS HAS THE AUTHORITY TO ALTER OR CHANGE THESE WARRANTIES OR TO MAKE ANY OTHER WARRANTY EITHER VERBALLY OR IN WRITING.

Effective Date: June 1, 2016



CRESTLINE®

ELITE PREMIUM WOOD WINDOWS & PATIO DOORS



ALUMINUM CLAD WINDOWS & PATIO DOORS



Crestline reserves the right to change product materials, specifications and methods of manufacture without prior notice. Please verify unit dimensions and/or rough openings with your local **MENARDS** store.